

15 Southburn Terrace , Hartlepool, TS25 1SQ

****SOLD WITH VACANT POSSESSION, NO CHAIN****, allowing for a smooth and hassle-free purchase.

Welcome to this charming end-terrace house located on Southburn Terrace in Hartlepool. Built in 1900, the property boasts a wealth of character, with traditional features that enhance its appeal throughout.

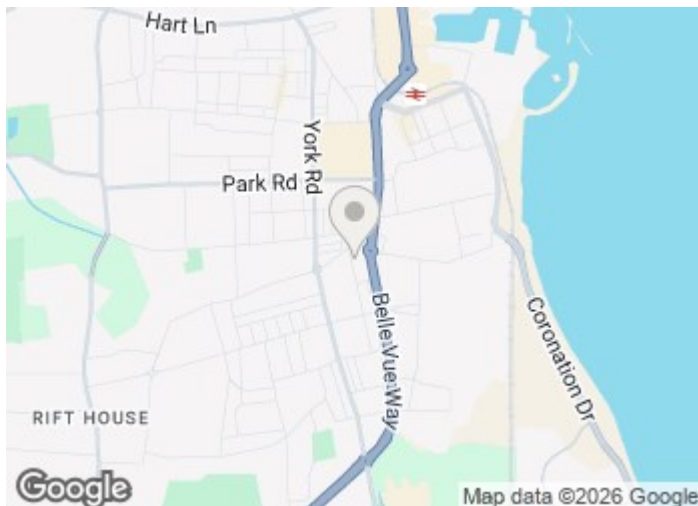
£88,000

15 Southburn Terrace

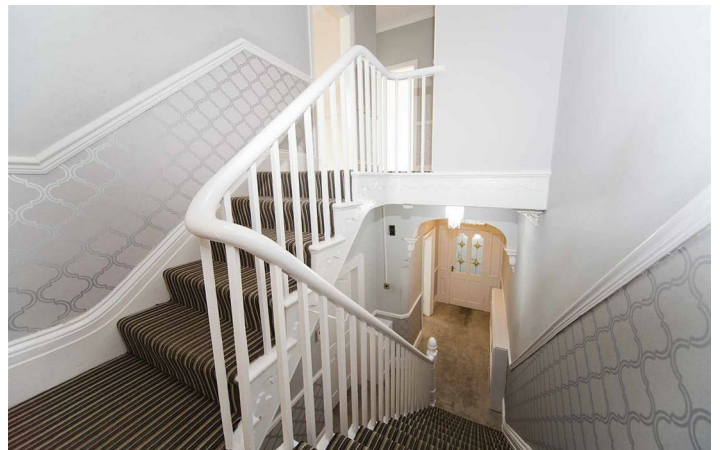
, Hartlepool, TS25 1SQ



- Traditional features throughout
- Modern Kitchen
- Gas Central Heating
- 2 large reception rooms
- 3 good sized bedrooms
- Impressive Hallway
- Large family bathroom with separate shower



[Directions](#)



Floor Plan

These particulars, whilst believed to be accurate are set out as a general outline only for guidance and do not constitute any part of an offer or contract. Intending purchasers should not rely on them as statements of representation of fact, but must satisfy themselves by inspection or otherwise as to their accuracy. No person in this firm's employment has the authority to make or give any representation or warranty in respect of the property.

